



# HEROLDS BAY™

COUNTRY ESTATE



## THE CASCADES - PLOT 103







Unit Number	Erf Area	Unit Type	Description	Ground floor Area	1st Floor Area	Lower Ground	Garage	Staircase	Covered Patio	Total (Council)	Balcony	Yard	Gross Total
Unit 1	476	Type C	3 Bedroom	59	112		47		20	238	10	10	258
Unit 2	460	Type Bm	3 Bedroom	107		54	40	8	17	226	10	9	245
Unit 3	313	Type B	3 Bedroom	107		54	40	8	17	226	10	9	245
Unit 4	407	Type A	2 Bedroom	122			37		20	179	10	7	196
Unit 5	357	Type Am	2 Bedroom	122			37		20	179	10	6	195
Unit 6	361	Type Bm	3 Bedroom	107		54	40	8	17	226	10	9	245
Unit 7	306	Type B	3 Bedroom	107		54	40	8	17	226	10	9	245
Unit 8	401	Type A	2 Bedroom	122			37		20	179	10	7	196
Unit 9	378	Type Am	2 Bedroom	122			37		20	179	10	6	195
Unit 10	332	Type Bm	3 Bedroom	107		54	40	8	17	226	10	9	245
Unit 11	313	Type B	3 Bedroom	107		54	40	8	17	226	10	9	245
Unit 12	411	Type A	2 Bedroom	122			37		20	179	10	7	196
Unit 13	373	Type Am	2 Bedroom	122			37		20	179	10	6	195
Unit 14	390	Type Bm	3 Bedroom	107		54	40	8	17	226	10	9	245
Unit 15	360	Type B	3 Bedroom	107		54	40	8	17	226	10	9	245











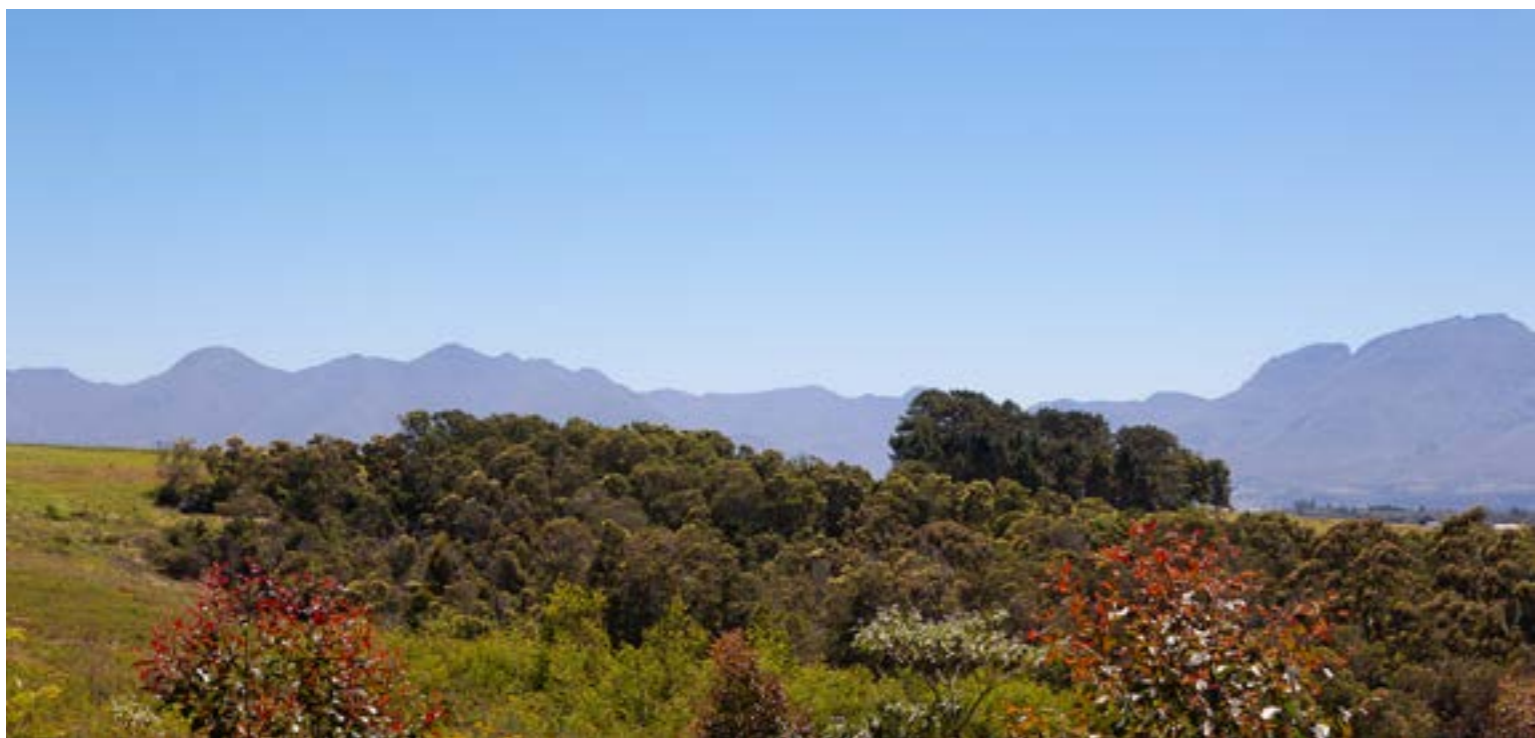
  
HEROLDS BAY™  
COUNTRY ESTATE





**TYPICAL VIEWS FROM UNITS 1-5**









**TYPICAL VIEWS FROM UNITS 6-11**



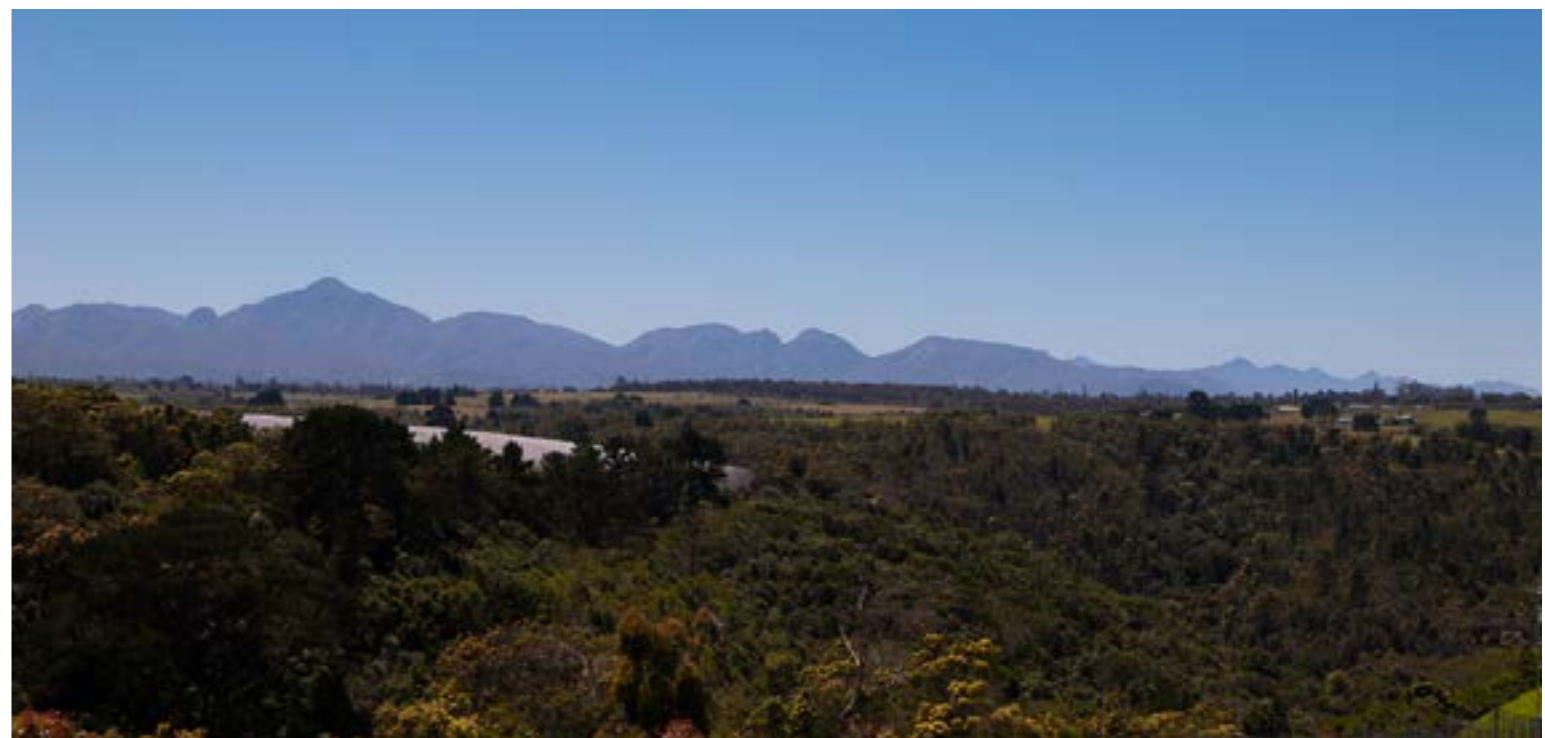






**TYPICAL VIEWS FROM UNITS 12-15**







# TYPE A - PLANS & ELEVATIONS

HEROLDS BAY COUNTRY ESTATE STAND 103

AREA SCHEDULE	
GROUND FLOOR AREA	122m <sup>2</sup>
GARAGE	37m <sup>2</sup>
COV. PATIO	20m <sup>2</sup>
<b>TOTAL (COUNCIL)</b>	<b>179m<sup>2</sup></b>
BALCONY	10m <sup>2</sup>
YARD	7m <sup>2</sup>
<b>GROSS TOTAL</b>	<b>196m<sup>2</sup></b>

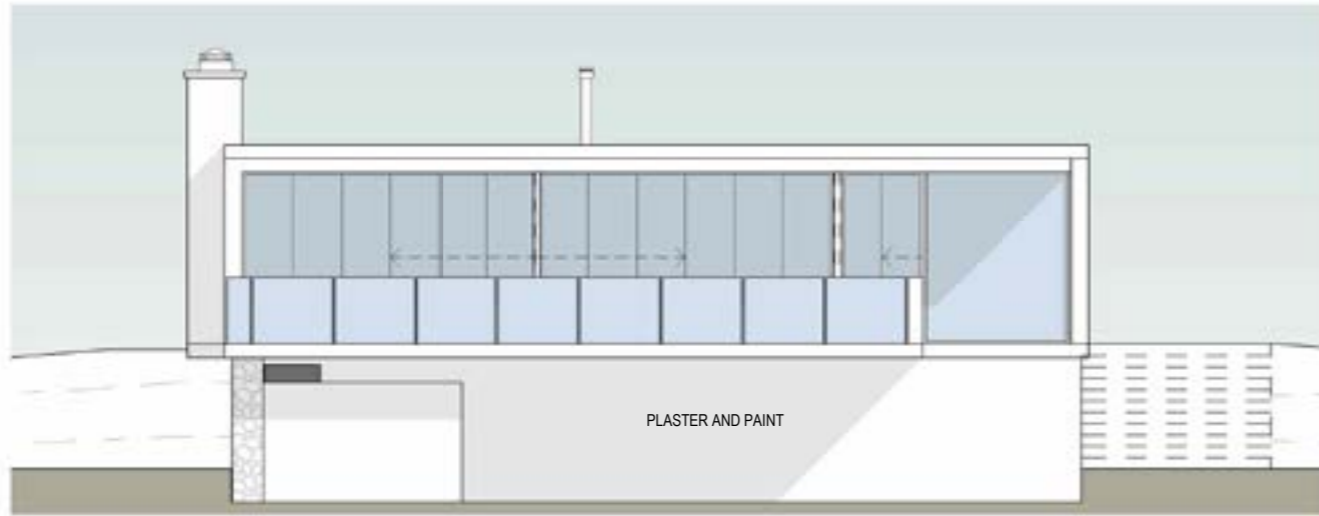


## GROUND FLOOR PLAN - TYPE A

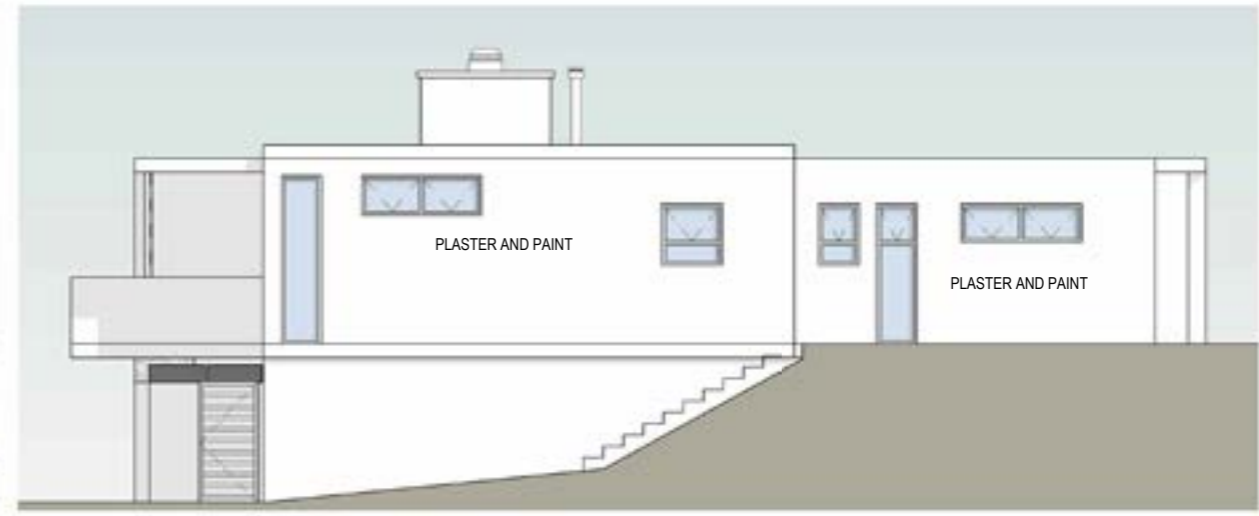
REV. A  
20231025



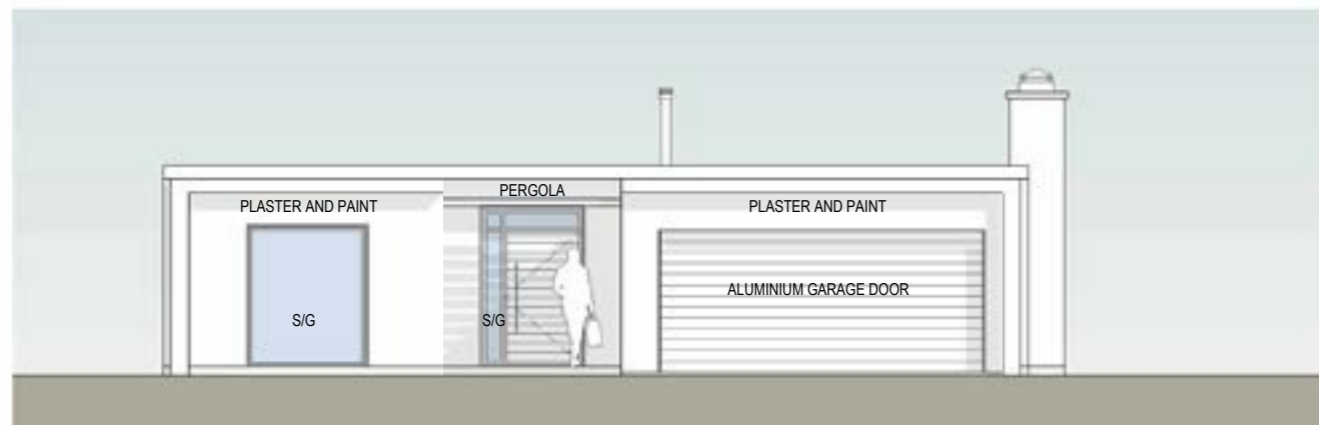




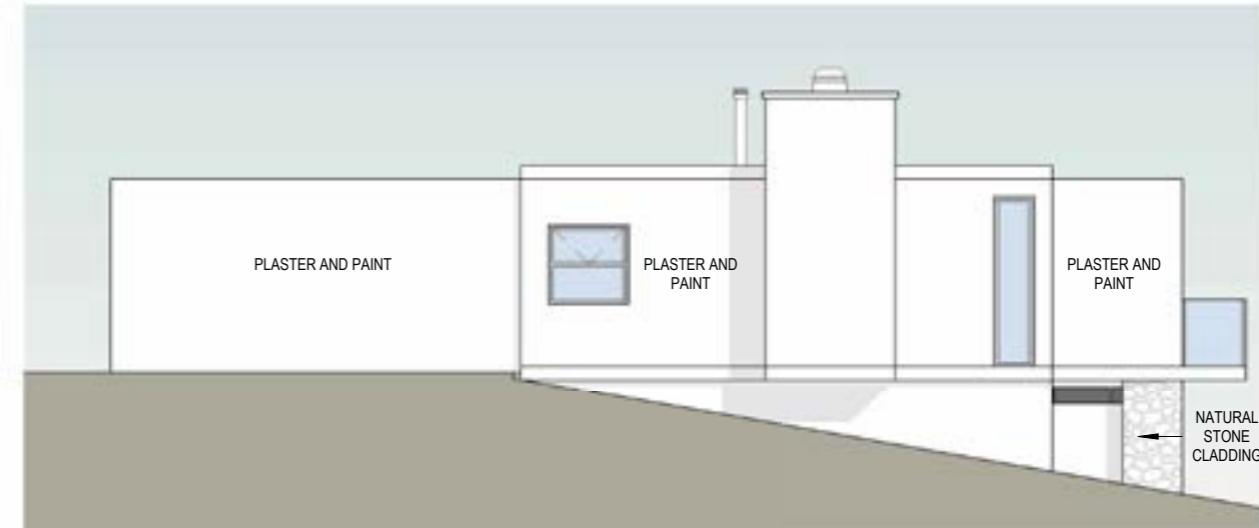
**ELEVATION SOUTH**  
Scale 1 : 100



**ELEVATION EAST**  
Scale 1 : 100



**ELEVATION NORTH**  
Scale 1 : 100



**ELEVATION WEST**  
Scale 1 : 100

**ELEVATIONS - TYPE A**

REV. A  
20231025



# TYPE A MIRRORED - PLANS & ELEVATIONS

HEROLDS BAY COUNTRY ESTATE STAND 103

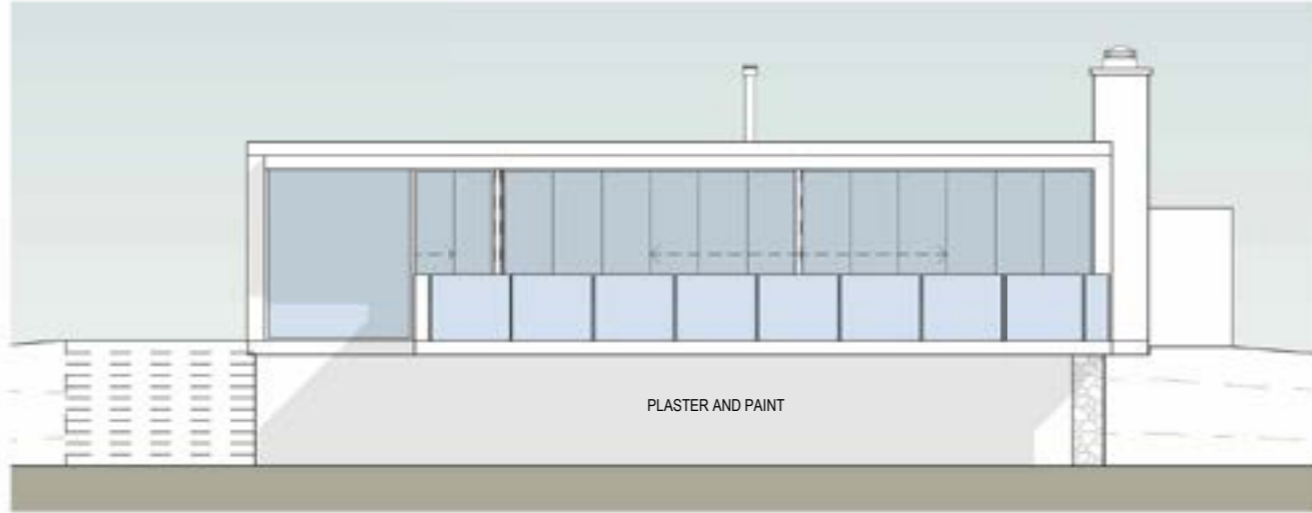
AREA SCHEDULE	
GROUND FLOOR AREA	122m <sup>2</sup>
GARAGE	37m <sup>2</sup>
COV. PATIO	20m <sup>2</sup>
<b>TOTAL (COUNCIL)</b>	<b>179m<sup>2</sup></b>
BALCONY	10m <sup>2</sup>
YARD	6m <sup>2</sup>
<b>GROSS TOTAL</b>	<b>195m<sup>2</sup></b>



## GROUND FLOOR PLAN - TYPE Am

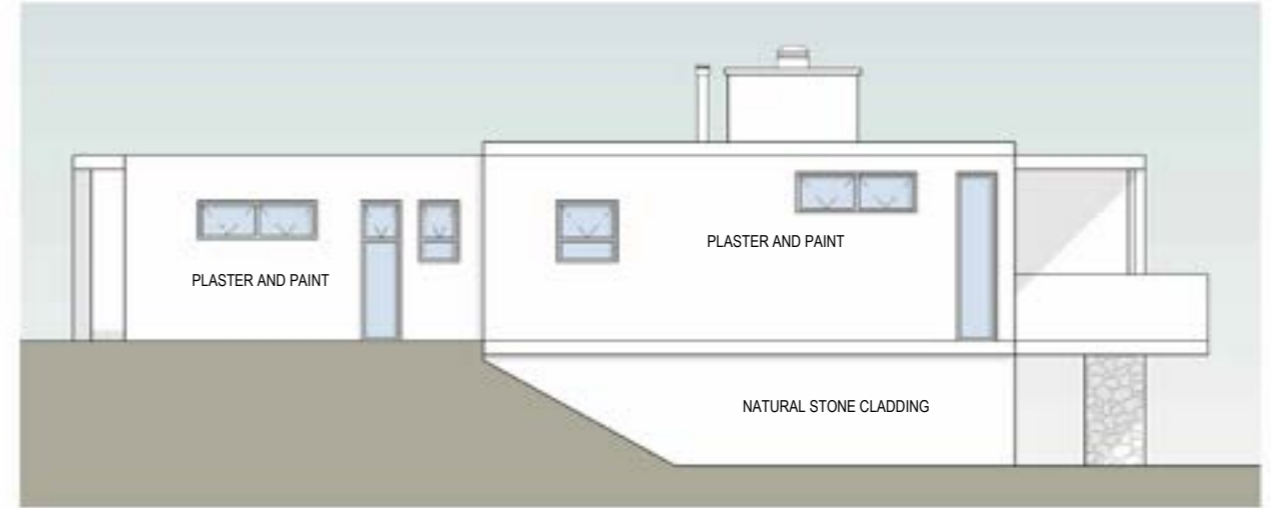
REV. A  
20231025





**ELEVATION SOUTH**

Scale 1 : 100



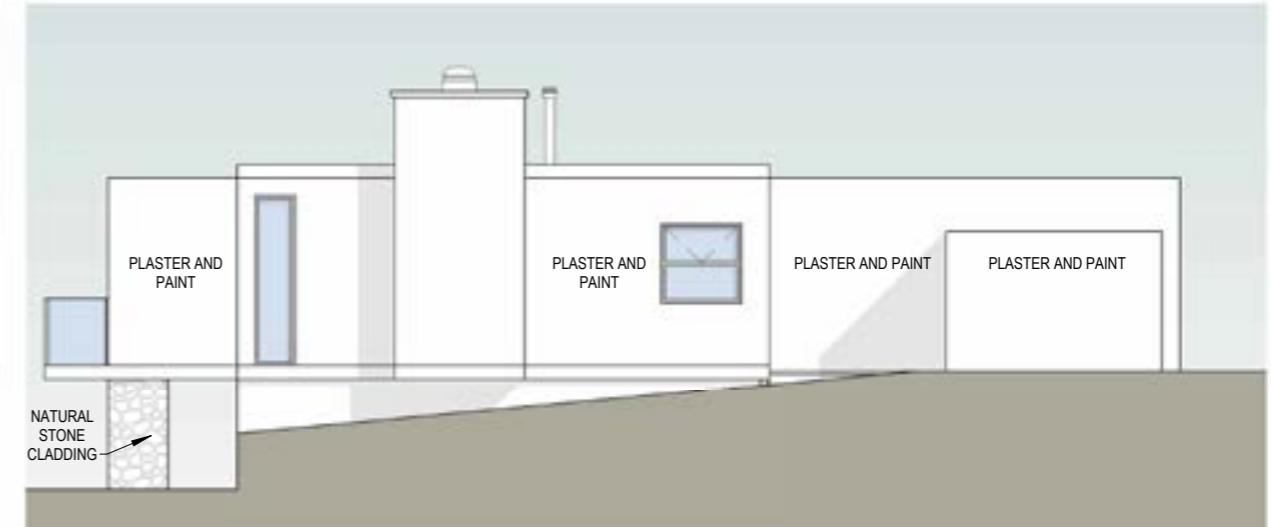
**ELEVATION WEST**

Scale 1 : 100



**ELEVATION NORTH**

Scale 1 : 100



**ELEVATION EAST**

Scale 1 : 100

**ELEVATIONS - TYPE Am**

















  
HEROLDS BAY™  
COUNTRY ESTATE



# TYPE B - PLANS & ELEVATIONS

HEROLDS BAY COUNTRY ESTATE STAND 103



## LOWER GROUND PLAN - TYPE B

REV. A  
20231025



## GROUND FLOOR PLAN - TYPE B

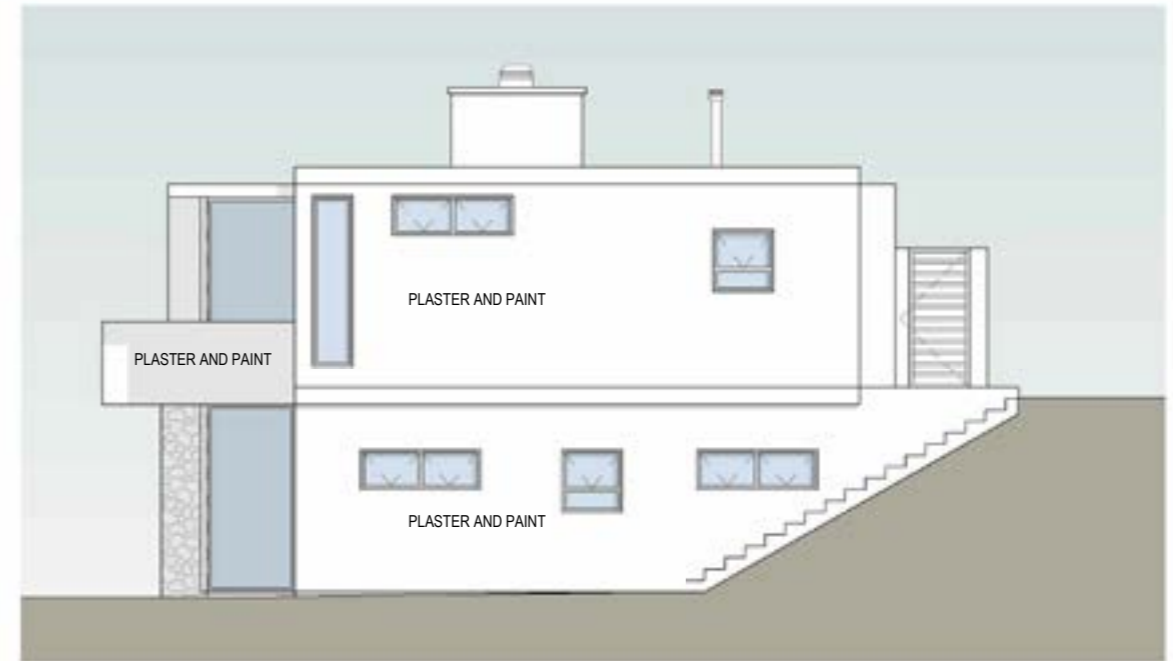
REV. A  
20231025





**ELEVATION SOUTH**

Scale 1 : 100



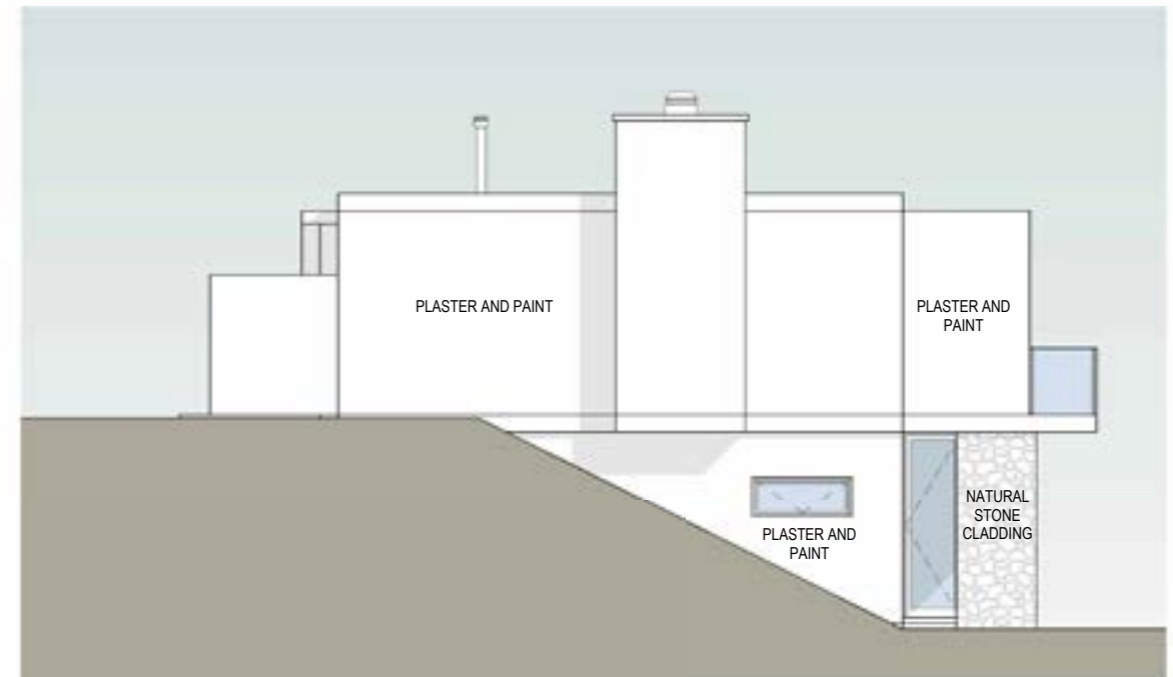
**ELEVATION EAST**

Scale 1 : 100



**ELEVATION NORTH**

Scale 1 : 100



**ELEVATION WEST**

Scale 1 : 100

**ELEVATIONS - TYPE B**



# TYPE B MIRRORED - PLANS & ELEVATIONS

HEROLDS BAY COUNTRY ESTATE STAND 103



## LOWER GROUND PLAN - TYPE Bm

REV. A  
20231025



## GROUND FLOOR PLAN - TYPE Bm

REV. A  
20231025

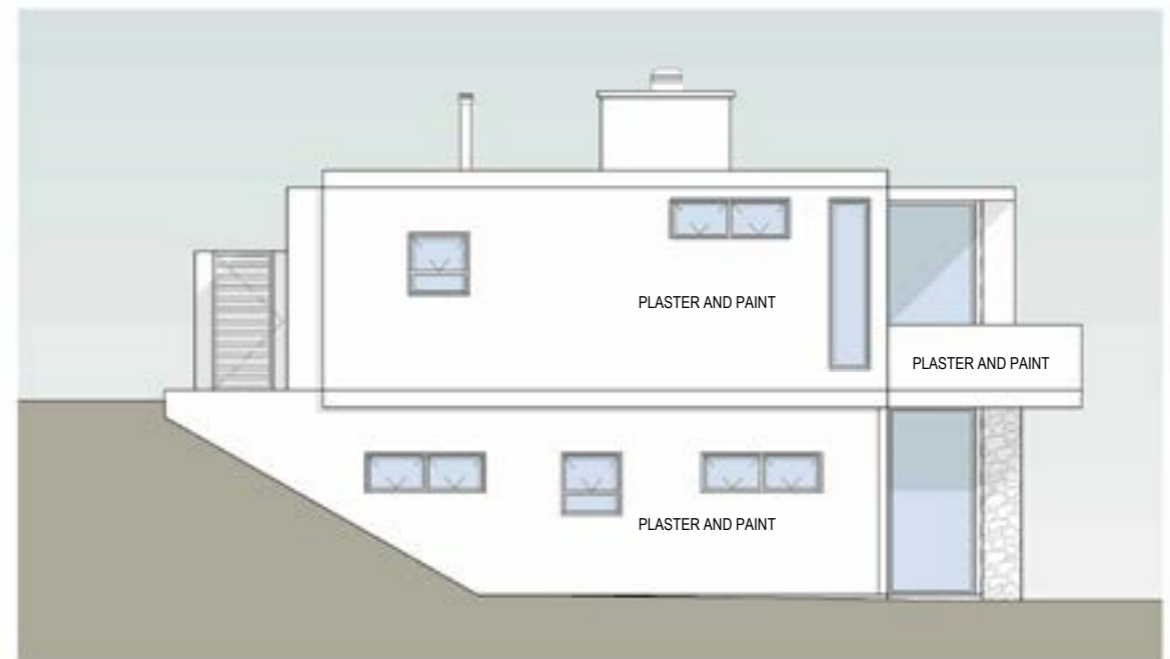


HEROLDS BAY COUNTRY ESTATE STAND 103



**ELEVATION SOUTH**

Scale 1 : 100



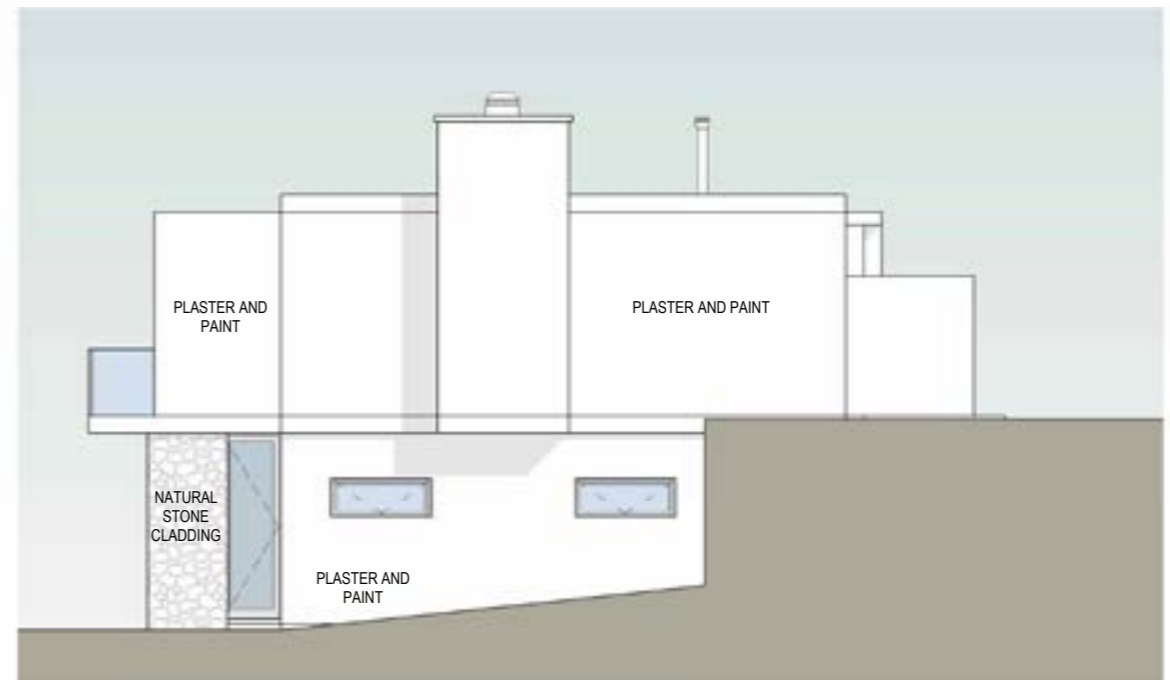
**ELEVATION WEST**

Scale 1 : 100



**ELEVATION NORTH**

Scale 1 : 100



**ELEVATION EAST**

Scale 1 : 100

**ELEVATIONS - TYPE Bm**









  
HEROLDS BAY™  
COUNTRY ESTATE





  
HEROLDS BAY™  
COUNTRY ESTATE







# TYPE C - PLANS & ELEVATIONS

HEROLDS BAY COUNTRY ESTATE STAND 103

AREA SCHEDULE	
GROUND FLOOR AREA	59m <sup>2</sup>
FIRST FLOOR AREA	112m <sup>2</sup>
GARAGE	47m <sup>2</sup>
COV. PATIO	20m <sup>2</sup>
<b>TOTAL (COUNCIL)</b>	<b>238m<sup>2</sup></b>
BALCONY	10m <sup>2</sup>
YARD	10m <sup>2</sup>
<b>GROSS TOTAL</b>	<b>258m<sup>2</sup></b>



## GROUND FLOOR PLAN - TYPE C

REV. A  
20231025



## FIRST FLOOR PLAN - TYPE C

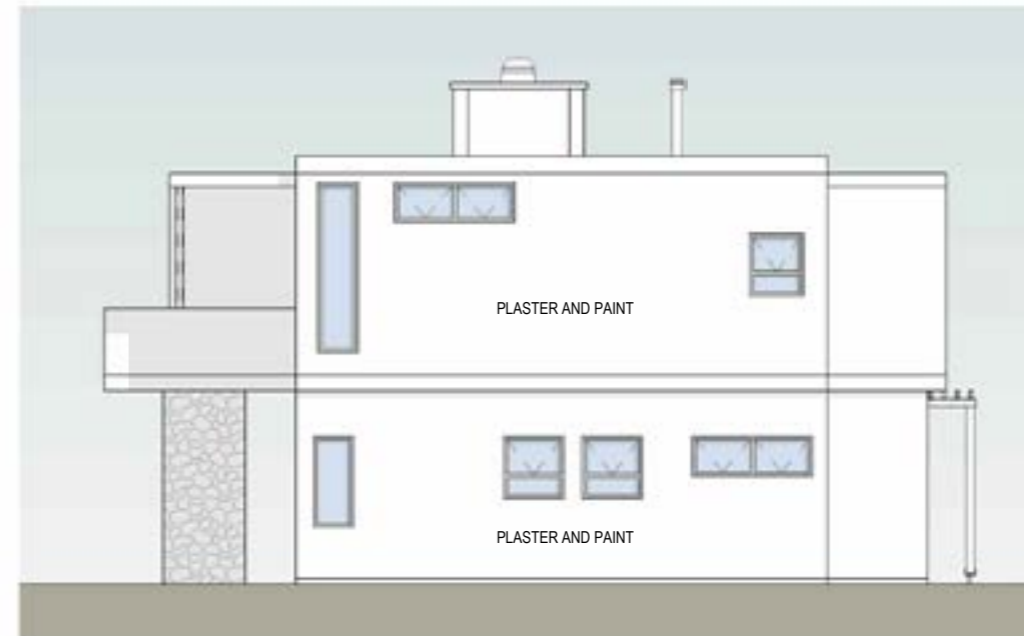
REV. A  
20231025





**ELEVATION SOUTH**

Scale 1 : 100



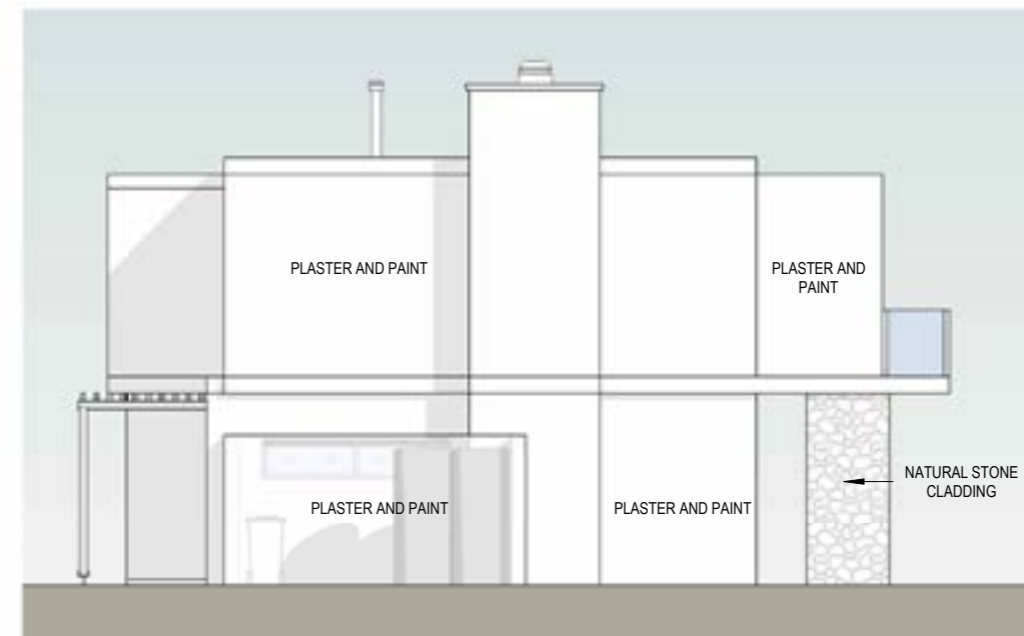
**ELEVATION EAST**

Scale 1 : 100



**ELEVATION NORTH**

Scale 1 : 100

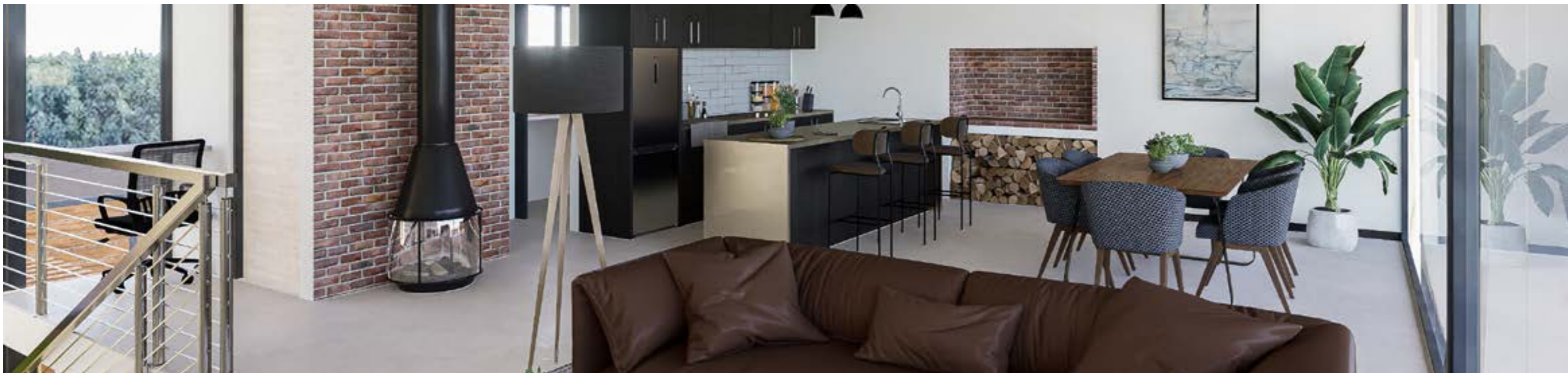


**ELEVATION WEST**

Scale 1 : 100

**ELEVATIONS - TYPE C**









  
HEROLDS BAY™  
COUNTRY ESTATE





Mere Group Pty Ltd.  
Office Suite No 3, 918 Kaap De Goede Hoop | Cnr of Kaap De Goede Hoop & Bloukrans | Hartenbos | 6520  
044 690 5721 | admin@mere.co.za | www.mere.co.za



Neil Tucker | 082 828 4893  
[www.heroldsbaycountryestate.co.za](http://www.heroldsbaycountryestate.co.za)

